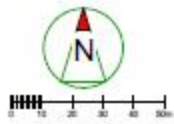


# 19/01544/FUL

Seafield Farm  
Seafield Lane  
Beoley

Continued use of land and farm buildings as a farm based Rural Educational and Interpretation Visitor Centre with associated facilities including visitor parking, the retention of outdoor play equipment, toilet blocks, animal enclosures, shelters and fencing, the wall filling the formerly open sided elevation of the southernmost building, pedestrian link between the café/play barn and winter barn and steel walling adjacent to the visitor parking area. Retention of a mobile office building for a twelve month period

**Recommendation: Refuse**



Seafield Lane

**KEY**

- Cattle Barn
- Storage
- Associated & Cold Storage
- REV Centre
- Visitor Parking



Rural Educational and Interpretation Visitor Centre with Associated Facilities

27,300 m2



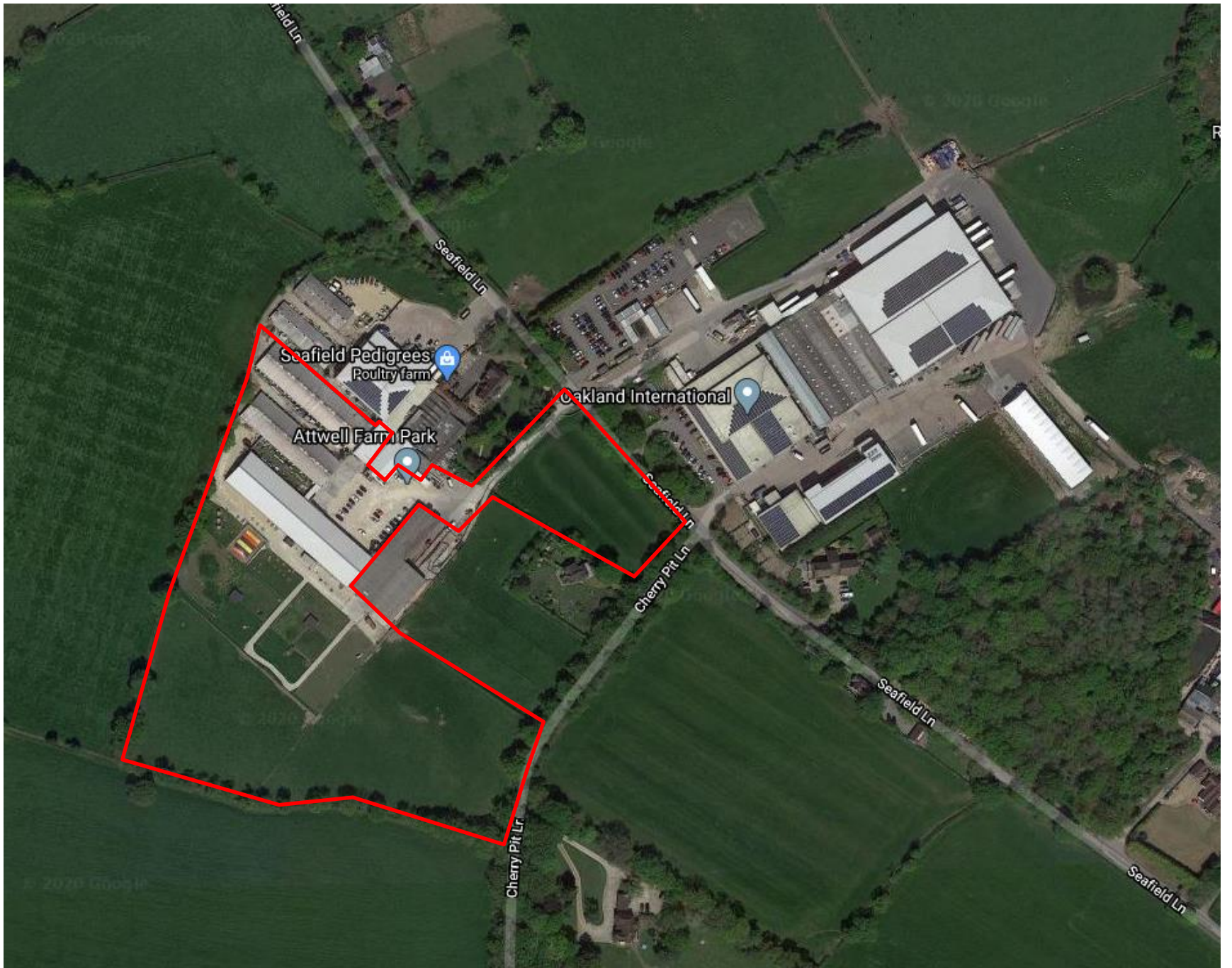
WC Blocks



Office

Cherry Pit Lane



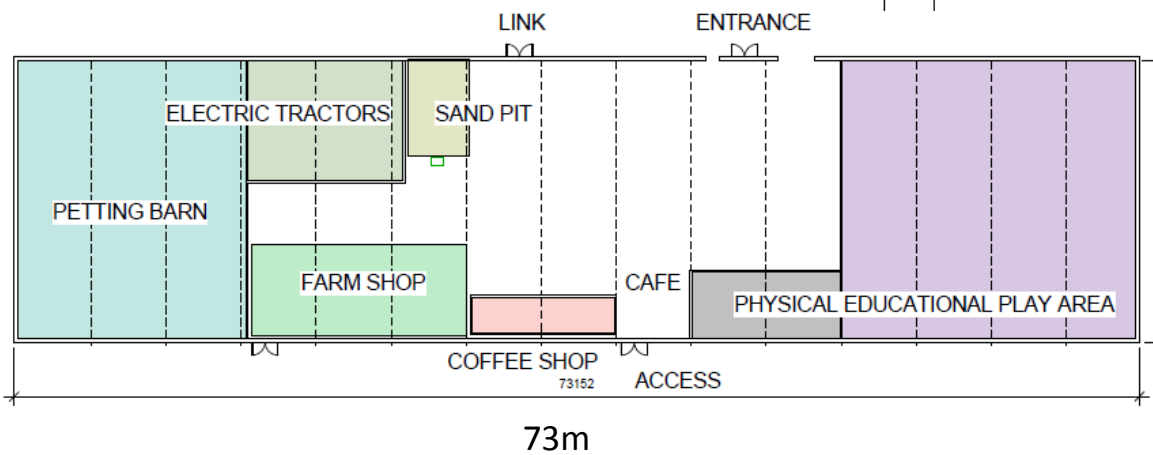
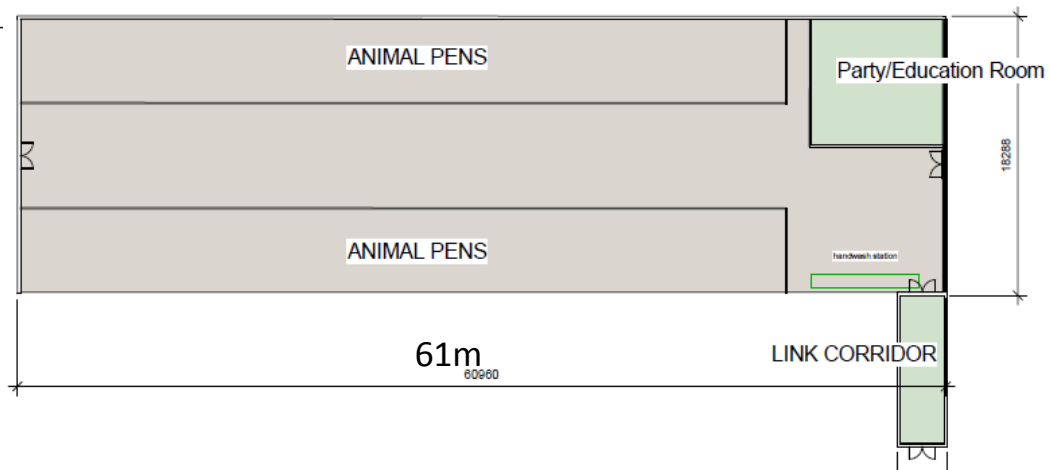
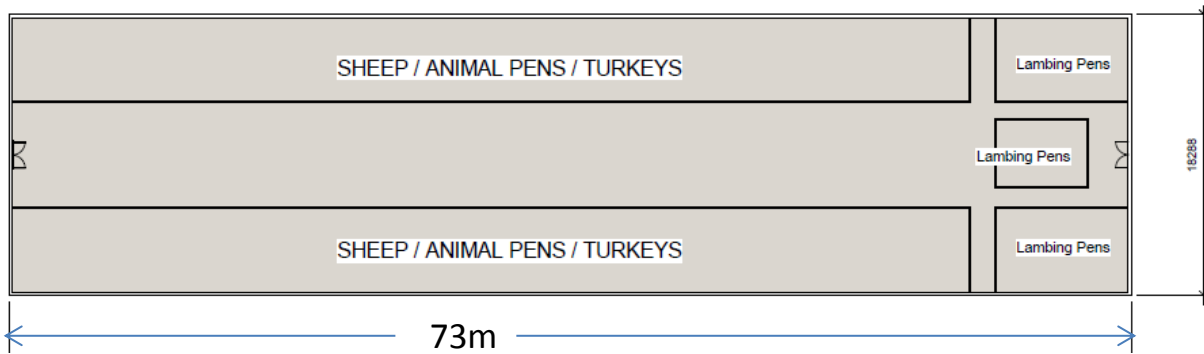


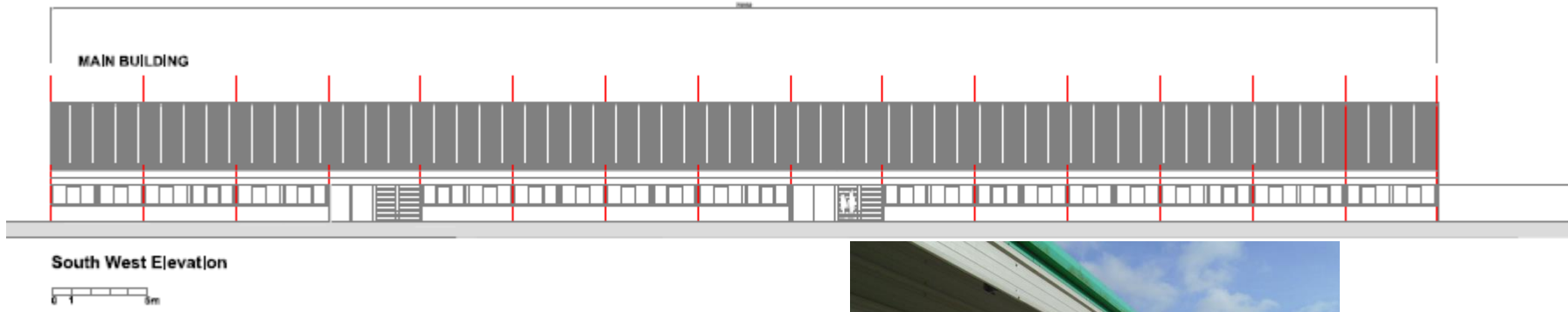
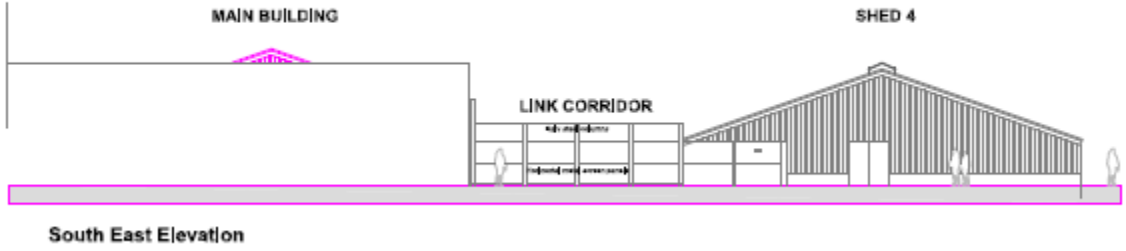




Site entrance

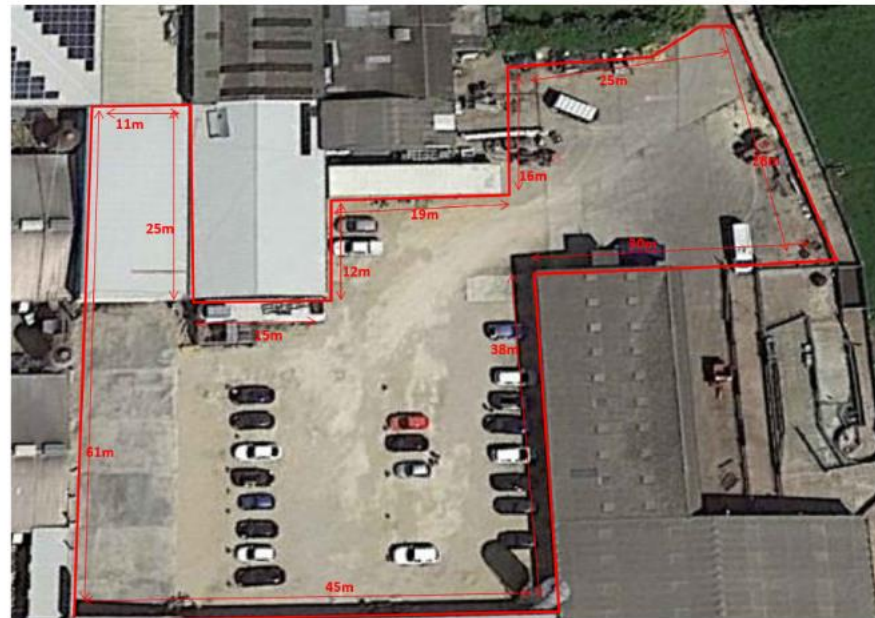
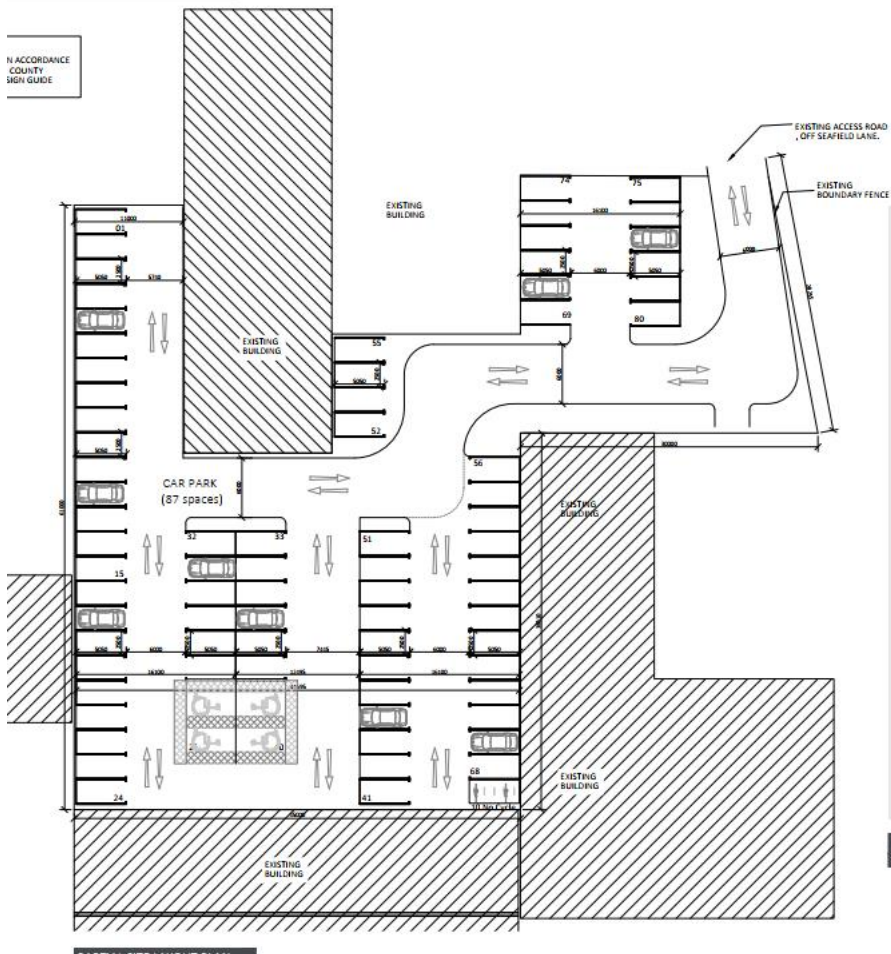
Approach to site along Seafield Lane







# Main yard parking









# Play area and toilet blocks





# Enclosures and animal shelters





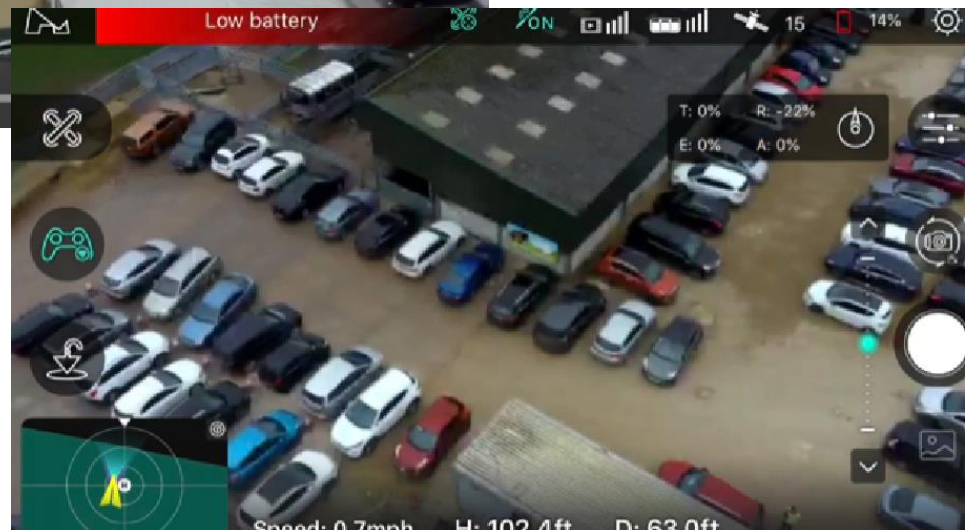
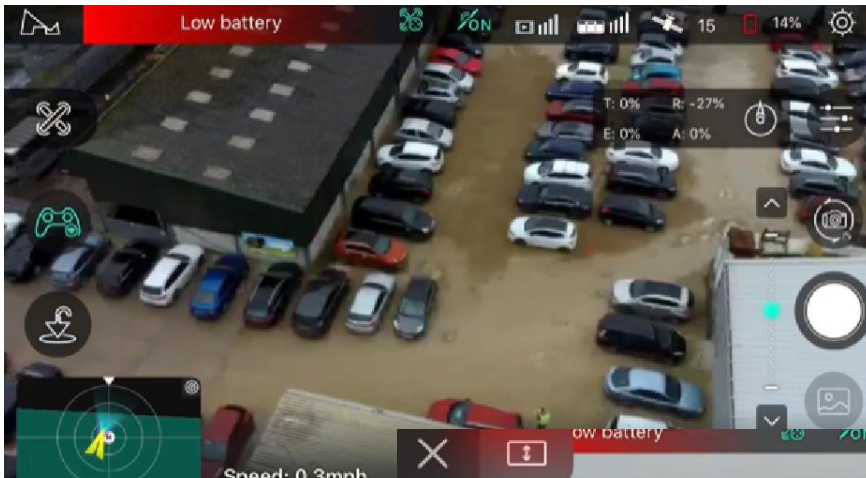






Public footpath from  
Cherry Pit Lane





Drone images of customer parking on weekday morning – February half-term break



Seafield Lodge



Overspill car park

Main entrance off  
Seafield Lane

LEAF  
Open Farm Sunday

Google



Seafield Lodge



Edge of overspill carpark

